



# OCTG Tubular Reconditioning SERVICE CENTER



Alice, Tx



## Tubular Reconditioning - SERVICE CENTER

### SCOPE OF WORK

OCTG total pipe inspection and reconditioning services complying with API-5CT standards of plain or threaded ends (EUE, NUE and Two Step, Pin/Box) on tubing pipe and casing pulled out from oil/gas wells located in Eagle Ford, Permian Basin, Barnett Shale and Bossier Shale in Texas.

Range of Diameter:

- ☐ API Tubing 1-1/2", 2-3/8", 2-7/8", 3-1/2", 4-12"
- ☐ API Casing 4-1/2", 5-1/2"

Grade: J-55, L-80

Manufacturing type: ERW or SML

### OPERATIONAL PROCESS

Pipe is received on Tejas Tubular facilities, downloaded and store in the yard allowing the culling process to start; following, the total length of the pipe is cleaned inside and outside, straightening all crooked pipe as required, and submitted to a visual total inspection by skilled personnel followed by a nondestructive test (NDT) inspection using the Electromagnetic Inspection (EMI) machine. EMI can detect a much wider range of defects than other testing methods – including fatigue cracks, corrosion, pits, cuts, washouts, and more.

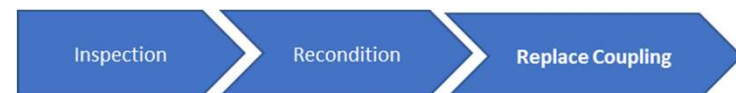
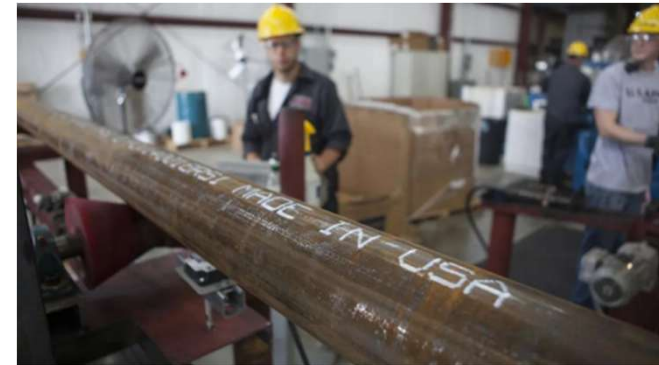
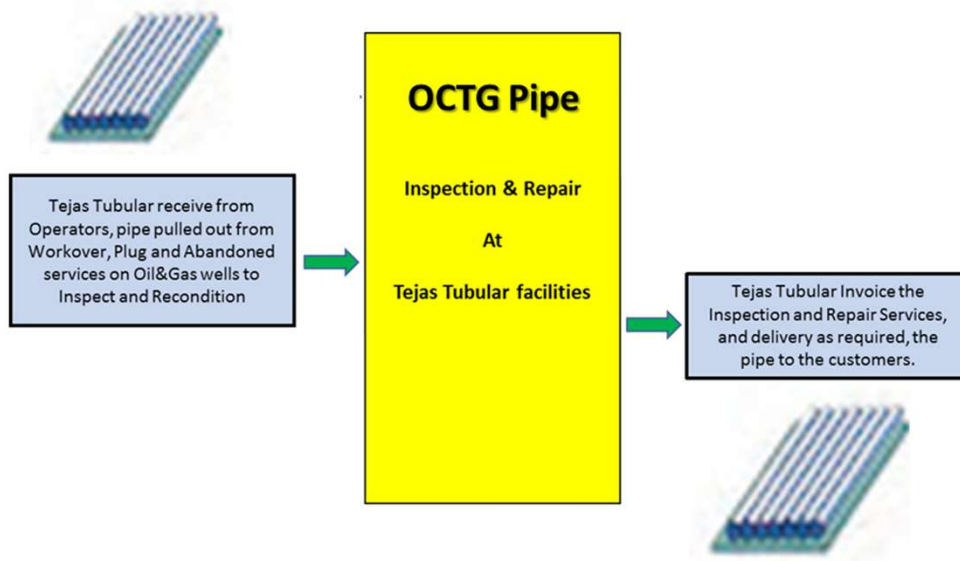
The ends threaded once inspected are remanufactured if required and the reconditioned pipe is submitted to a hydrostatic test. The pipe couplings are removed, inspected, and reinstalled; new couplings and thread protectors are used, as required.

Once finishing the reconditioning, the pipe is tally, varnished as required, stenciled and stored on a yard ready to be picked up by the customer for Oil & Gas wells operations.

## Tubular Reconditioning - SERVICE CENTER

**Tubular Reconditioning Services** on pipe pulled out from workover, plug and abandoned Oil & Gas wells in Texas, and pipe from E&P companies who demands tubular inspections or replacing couplings for better performance on pipe to be used on their horizontal work strings operations.

### RECERTIFICATION TUBING AND CASING



**Alice, Tx**



## Tubular Reconditioning & Inventory Management



- Receive material
- Culling process – to eliminate the possibility of working on scrap pipe
- Remove, clean and inspect couplings **as required**
- Internal and external cleaning of the tub, simultaneously drift
- Straighten tubing as required
- Four function Electromagnetic inspection of the pipe. Band per customer specs
- Thread repair as required
- Install inspected and replacement couplings **as required**
- Pressure test and install protectors **as required**
- Stencil and external coat **as required**
- Issue completion report and update inventory records
- Also available is workover rentals

## Corporate Values



Safety &  
Environmental  
Stewardship



Quality &  
Customer  
Satisfaction



- ✓ Quality Services
- ✓ ETDBW (Easy To Do Business With)
- ✓ Competitive Pricing



Material  
Utilization



Productivity & Cost  
Effectiveness

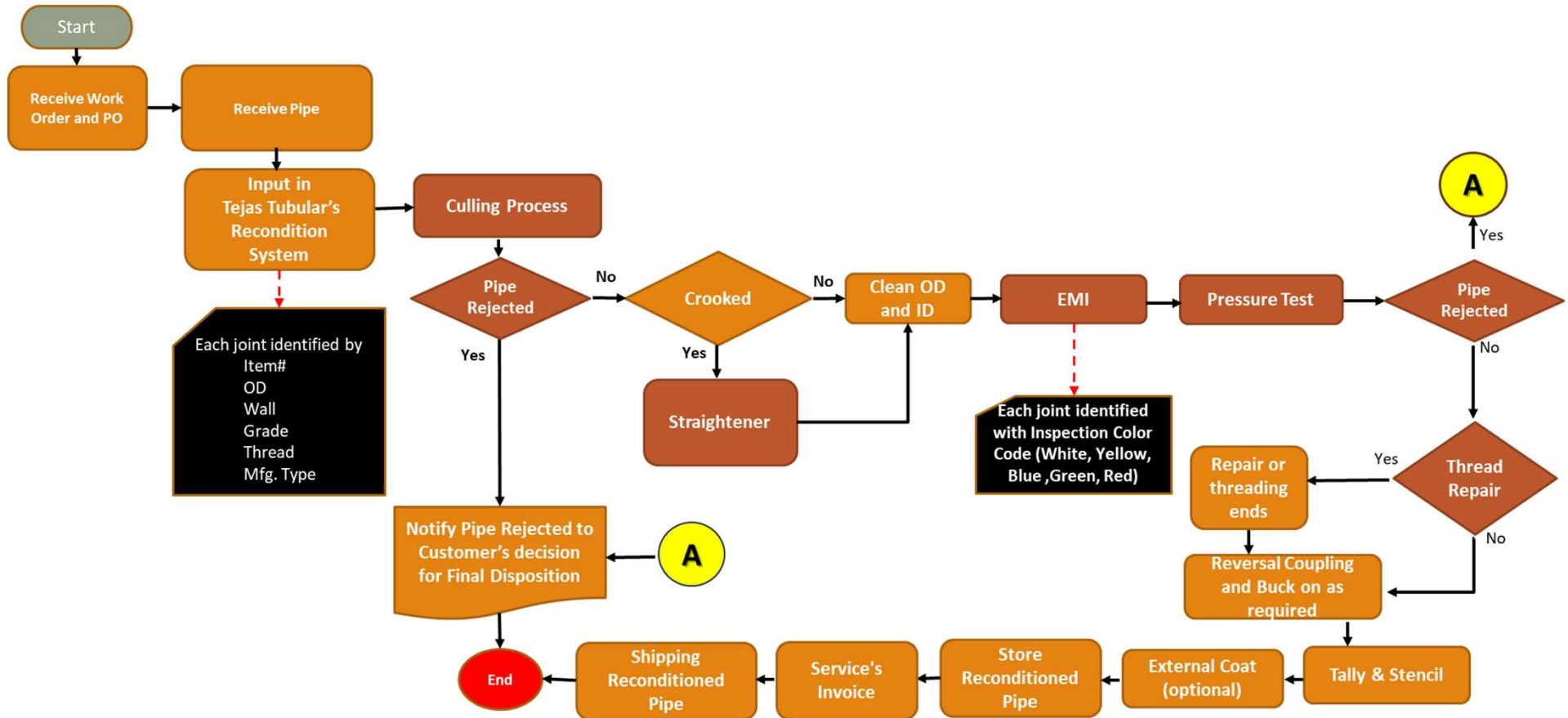
## PROFESIONAL AFFILIATIONS



SOLUTION MINING  
RESEARCH INSTITUTE



## Pipe Recondition - Flow Diagram



## Tubular Reconditioning



### Mobilization From Yard Operations



Visual Inspection



Straightening and Drift



NDT Inspection (EMI Equipment)



### GENERAL INSPECTION



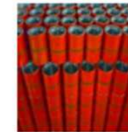
Rechase Threaded Ends



Thread Quality Assurance



Install Couplings



### REPAIR PROCESS



Hydraulic Test



Thread Protector (PIN-BOX) Installation



Coating & Stencil



Pipe on Bundle and Yard Storage



### RECERTIFIED PIPE MOBILIZATION TO CUSTOMER

## CORE ACTIVITIES

## RECONDITIONING PIPE

**Field Service Center:**  
**2100 Co Rd 115, Alice, TX 78332**

Method: Total Inspection and Reconditioning Pin-BOX (Rechase Method)  
 under API 5CT Standards \*

Thread: EUE, NUE, Two Step      Type: ERW or SML

Diameter: 1-1/4", 1-1/2", 2-3/8", 2-7/8", 3-1/2", 4-12" \*  
 Grade: J-55, L-80



% Defect, % Remaining WALL

**YELLOW** 0-15%, >85%

For downhole use

**BLUE** 16-30%, >70%

For downhole limited service use

**GREEN** 31-50%, >50%

For flow line use

**RED** >50%, <50%

For scrap/structural use

### \* COLOR CODE CLASSIFICATIONS for USED PIPE



**CLASS 2**, Yellow band: 0-15% body wall reduction (85% minimum remaining)



**CLASS 3**, blue band: 16-30% body wall reduction (70% minimum remaining)



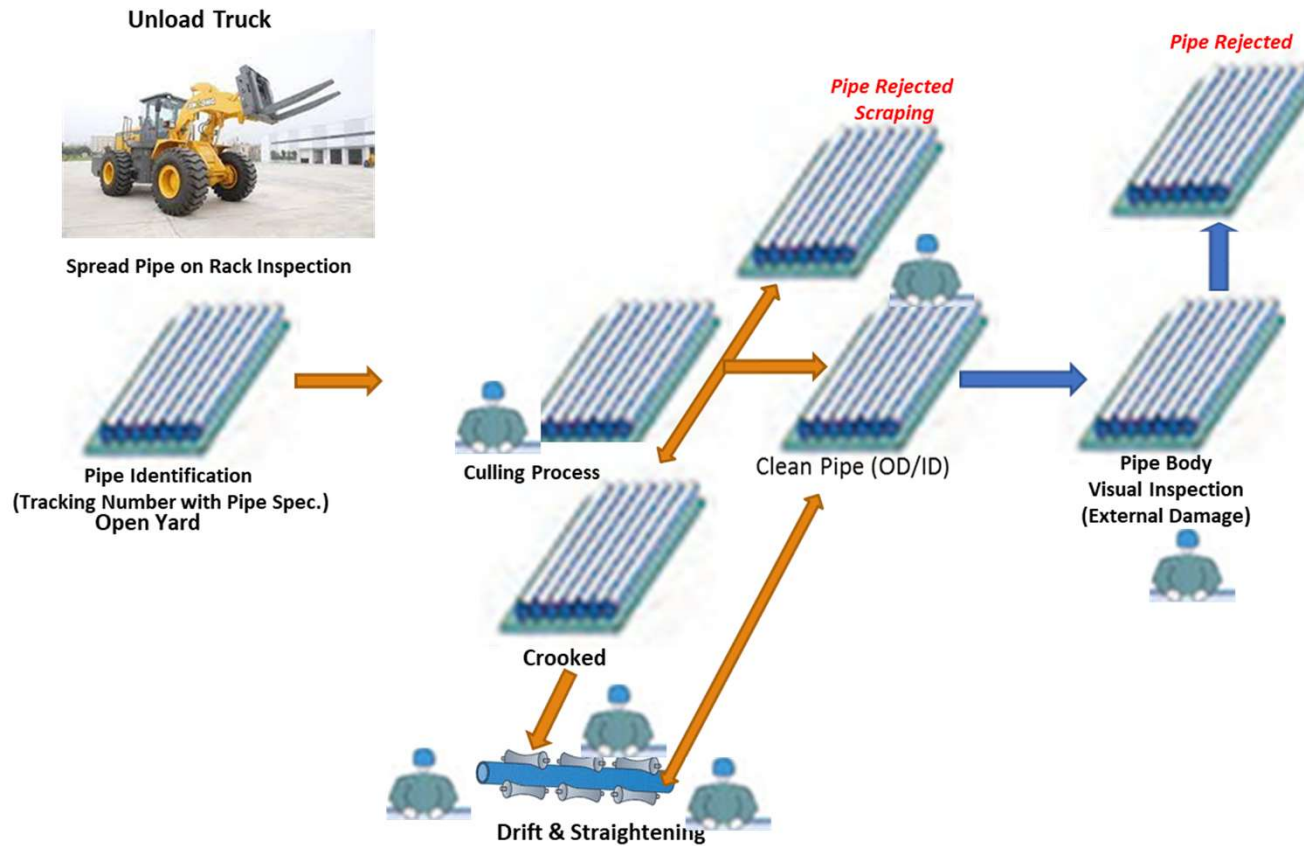
**CLASS 4**, green band: 31-50% body wall reduction (50% minimum remaining)



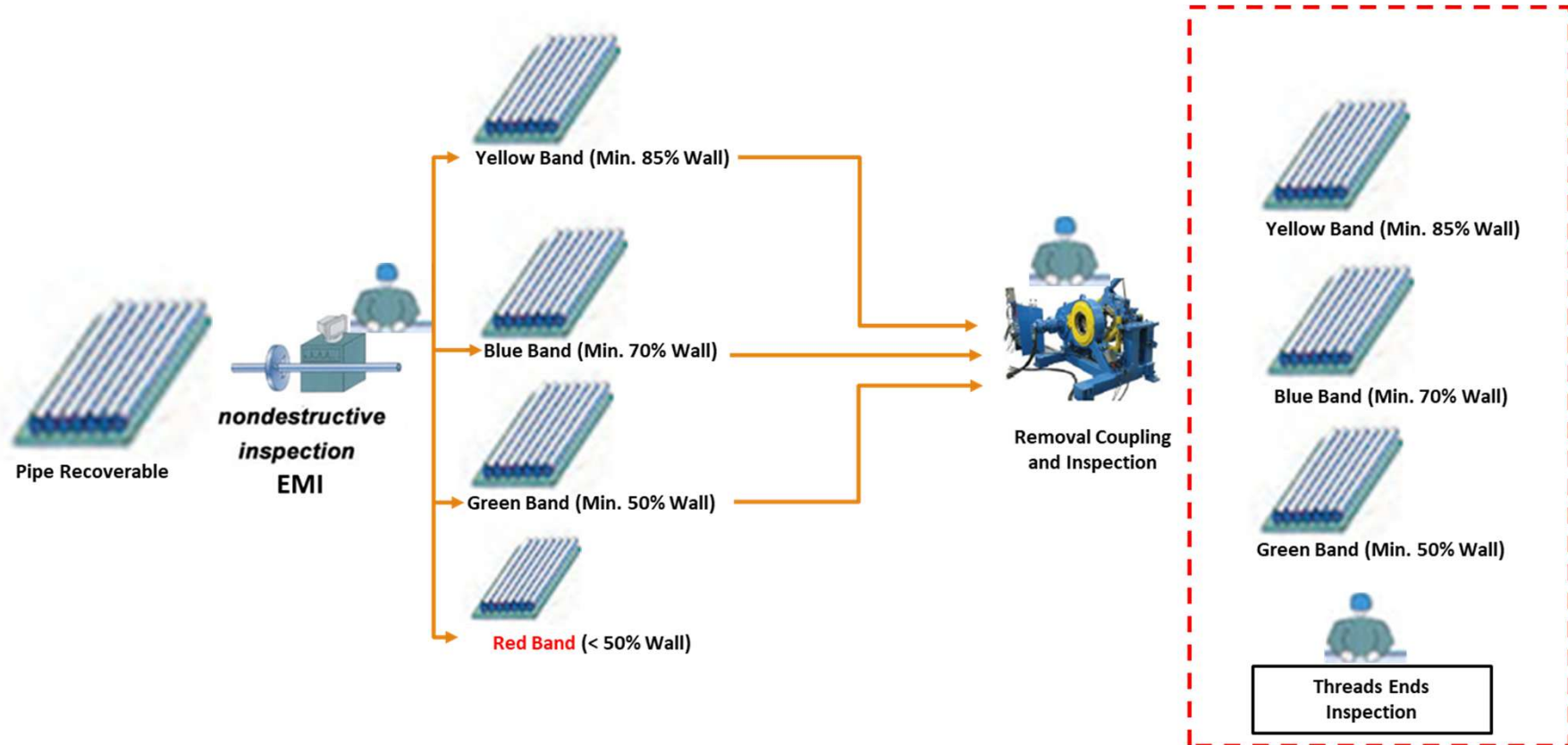
**CLASS 6**, red band: >50% body wall reduction (less than 50% remaining)



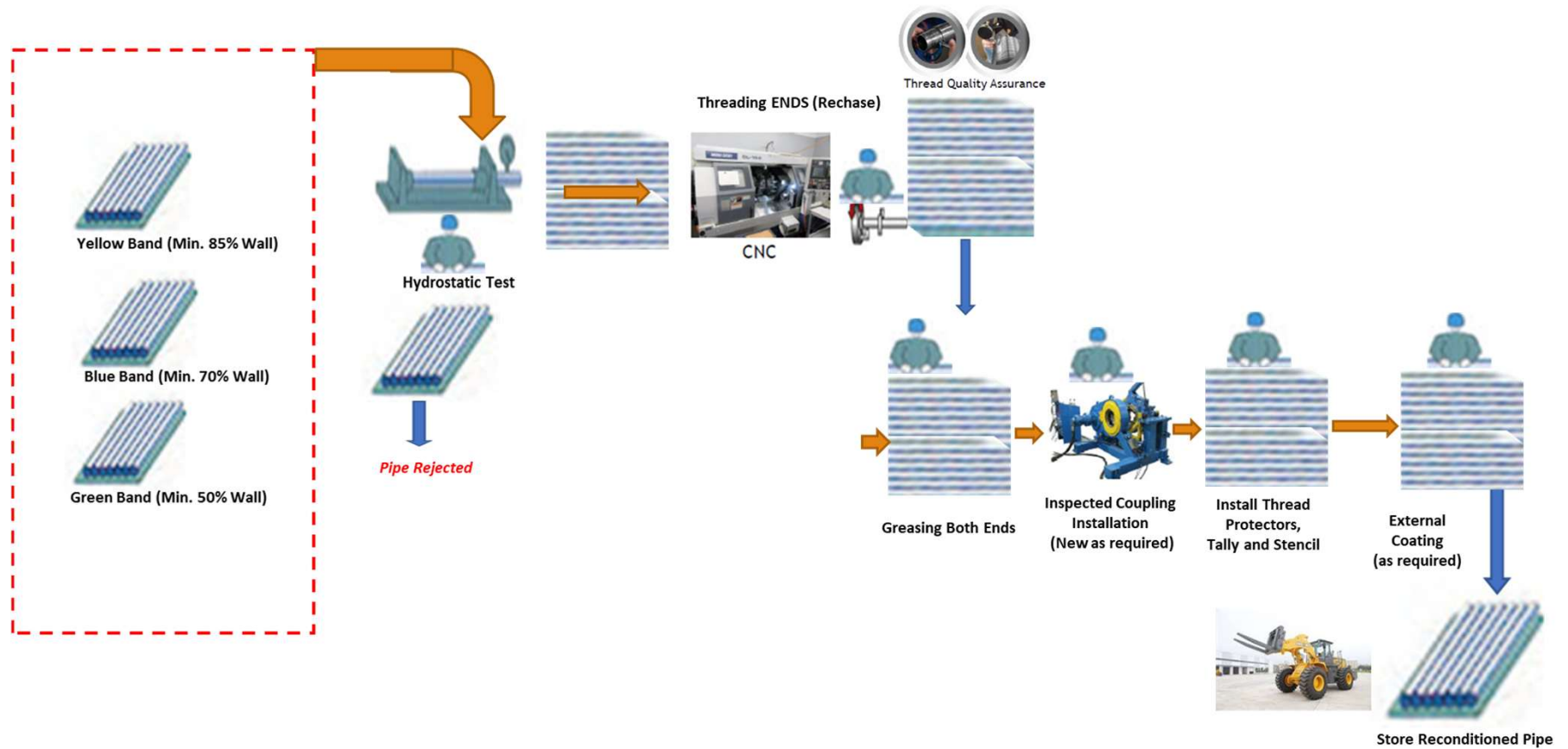
## Pipe Recondition – Station 1



## Pipe Recondition – Station 2



## Pipe Recondition – Station 3





**OILFIELD SERVICES**

**Tejas Tubular Oilfield Services**

Telephone: 281.833.1940

Toll-Free: 833.521.1940

Email: [sales@tejasoilfieldservices.com](mailto:sales@tejasoilfieldservices.com)

8526 Green River Drive Houston, TX 77028

**Field Service Center:**

2100 Co Rd 115, Alice, TX 78332

